

# EDUCATION & INDUSTRY: A WALK AROUND HISTORIC INDIANA

The town of Indiana, PA saw incredible growth during the late nineteenth and early twentieth centuries. On this tour, witness the buildings and locations which housed some of the county's most productive and innovative operations.

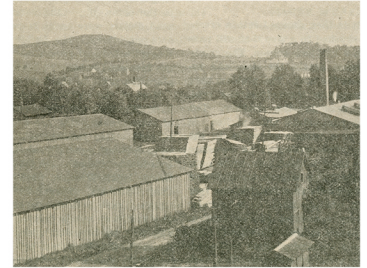
## 1. 319 PRATT DRIVE - INDIANA CARRIAGE COMPANY

The Indiana Carriage Company, which began producing surreys, traps, phaetons, sleighs, buggies, delivery, freight and express wagons, and bobsleds here in 1904, was capable of shipping 2,000 vehicles annually by 1907. These vehicles sold in Pennsylvania, Ohio, New York, Maryland, and Pittsburgh. The company shut down in 1910 due to the rise of the automobile and a lack of lumber for construction.



## 2. 2 RICE AVENUE - INDIANA BENT RUNG LADDER COMPANY

After Edward Rowe patented his new bent rung ladder in 1881, he formed the Indiana Bent Rung Ladder Company in 1891. The company moved to this location in 1892, soon sending their famous ladder to England, Scotland, South Africa, South America, Puerto Rico, Hawaii, and across the continental United States. The company even provided ladders for the building of the Panama Canal in 1908. Besides ladders, the company also produced porch swings, folding cots, folding chairs, blackboards, tables and chairs, desks, toy ladders, stretchers, and sleds. The company closed in 1929 due to low demand for ladders and the lack of use for porch swings with the coming of automobiles.



## 3. 1030 AND 1069 WAYNE AVENUE - INDIANA COUNTY STREET RAILWAYS COMPANY

The Indiana County Street Railways Company was formed in 1907, connecting Indiana to Ernest, Homer City, Blairsville, and Graceton by 1910. In addition to passenger cars, there was a work car to perform construction and repairs, a freight car to handle large goods, and car No. 8- a snowplow. In 1910, 1,469,666 county residents rode on a streetcar belonging to the company. To the left was their machine shop where streetcars were repaired. The building to the right was the car barn, which held 8 cars maximum. The company discontinued all operations in 1933 due to less passenger and freight revenue.

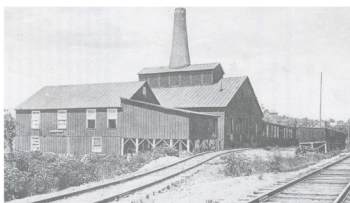


## 4. 1060 WAYNE AVENUE - INDIANA DAIRY COMPANY

The Indiana Dairy Company began operations in 1915, moving to this location in 1928, when they built this plant. In this plant the company produced milk, orange juice, coffee cream, whipping cream, sour cream, cottage cheese, and ice cream. In 1959, Better Dairies bought the Indiana Dairy Company and renamed it the Indiana All-Star Dairy. The Dairy moved to the old Greiner Baking Company building on Oak Street in 1967, and closed in 1976.



## BONUS STOPS!



**A. 694 SOUTH 11TH STREET - INDIANA GLASS COMPANY** The Indiana Glass Company began operations here in 1892, producing shades, lamps, jugs, jars, bowls, tumblers, jelly glasses, opal shades, flasks, and candlesticks. These products sold in New York City, Philadelphia, St. Louis, Chicago, London, and Canada. The most famous owners of the company were Harry Northwood and Thomas Dugan, who knew the secret of "beautiful colored glass." At its height, the company employed about 250 people. After a fire in 1931, the company never resumed operations.



**B. 1190 MAPLE STREET - INDIANA MACARONI COMPANY** Owned by John Rezzola and Carlo Martino, the Indiana Macaroni Company began producing its 23 different styles of macaroni at this location in 1914. The company could create 230 pounds of macaroni in eight minutes, and sold its product in Florida, Maine, Texas, and Michigan. The macaroni company was the largest food producer in Indiana County until its closing in 1951.



PUBLISHED 2023

Brought to you by the Indiana County Walking Decathlon and the Indiana County Historical & Genealogical Society. For more self-guided walks, visit Indiana County Walking Decathlon on Facebook or online at [icopd.org](http://icopd.org) (look for the Decathlon logo). For more information about the history of Indiana County, visit the Historical and Genealogical Society of Indiana County on Facebook or online at [hgsic.org](http://hgsic.org). Questions? Email [info@hgsic.org](mailto:info@hgsic.org).

